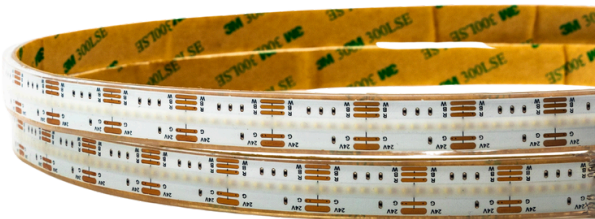


FLEXIBLE RGBW COB LED RIBBONS 20W/m



General features

Models	FLEXE
Voltage (V)	24
Number of LED/m	1240
LED package	COB
Angle (°)	140
Secability (cm)	12
IP index	65
Width (mm)	12
Double-face adhesive	3M
Max. length in serie (m)	5

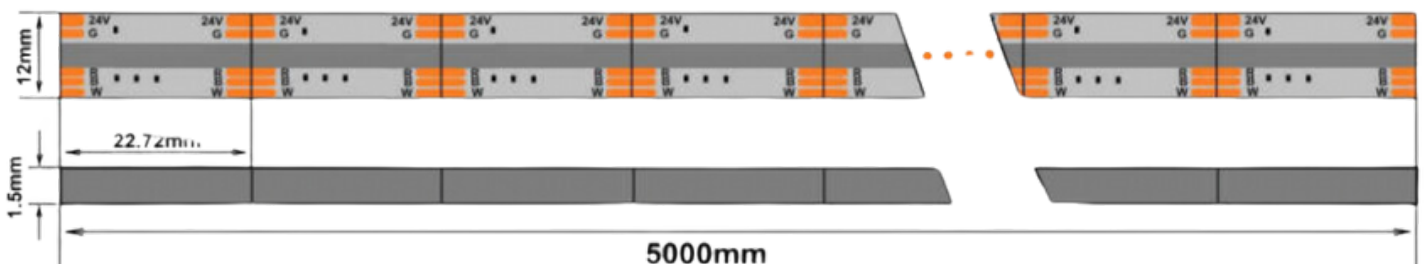


Photometric characteristics

References	Power (W/m)	Color CCT (K°)	White CRI	Flux RGBW (Lm/m)
FLEXE-000012B	20	3000	90	R: 280 G: 480 B: 220 W: 520
FLEXE-000013B	20	4000	90	R: 280 G: 480 B: 220 W: 580
FLEXE-000014B	20	6000	90	R: 280 G: 480 B: 220 W: 580

Technical drawing

*14mm with silicone sleeve



STANDARDS IEC
IEC 62031
IEC 62471
IEC 62717
IEC 61000-4-2